

CONTACT

1220 Pacific Avenue, Kelowna BC
T: 647-227-3863 E: taryn@vlsdevelopments.com
THE RYDELL.COM
@therydellkelowna
The Rydell: Kelowna's Central District

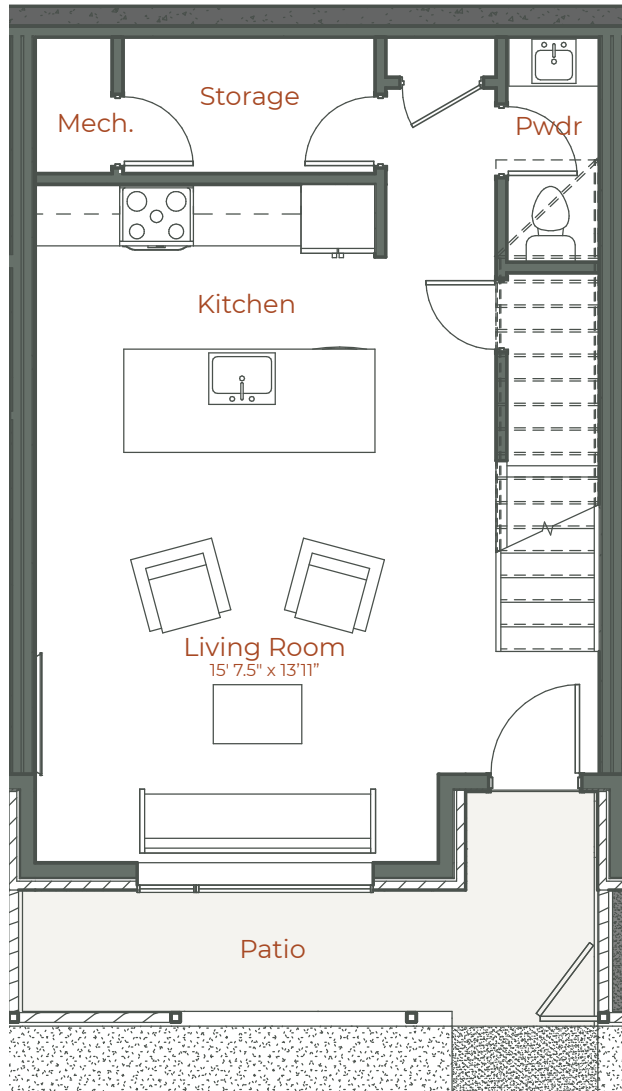
The City

2BED/2.5BATH TOWNHOUSE

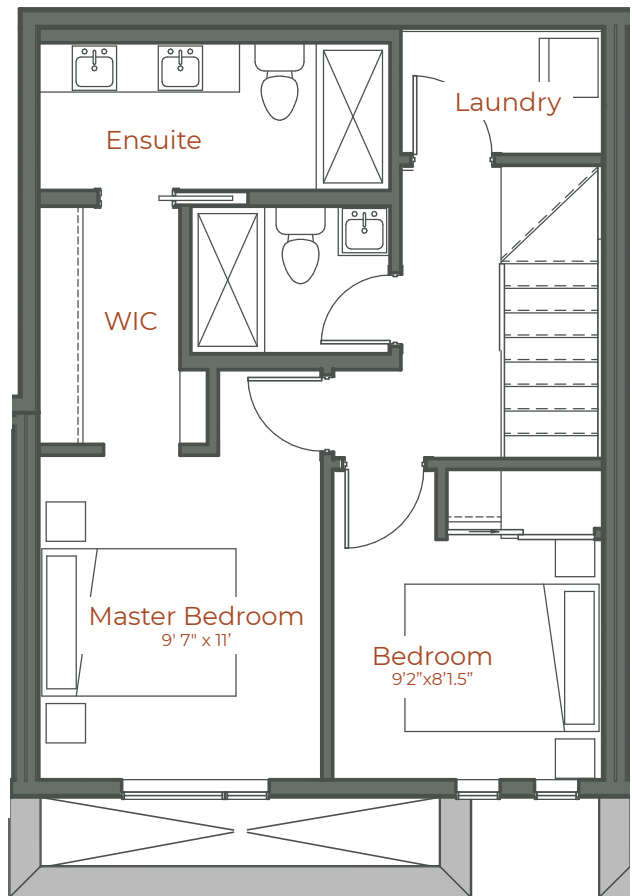
- HIGHLIGHTS**
- 10' Ceilings (main floor)
- 9' Ceilings (upper floor)
- Quartz Countertops
- Stainless Steel Appliances

Indoor Living	1,072 Sq Ft
Outdoor Living	97 Sq Ft
Total	1,169 Sq Ft

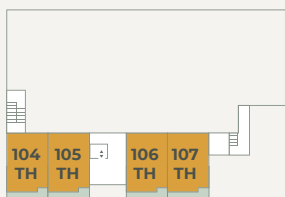
Main



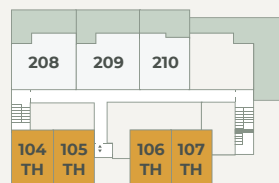
Upper



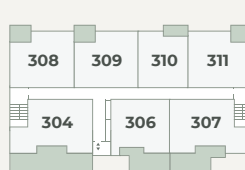
1st Floor



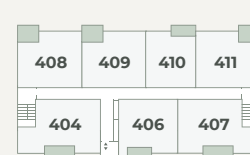
2nd Floor



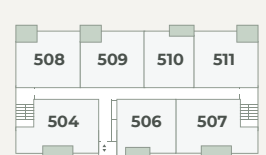
3rd Floor



4th Floor



5th Floor



Pacific Ave

*The developer reserves the right to modify or change plans, specifications, features and prices without notice. Materials may be substituted with equivalent or better at the developer's sole discretion. All dimensions and sizes are approximate and are based on architectural measurements. As reverse, mirrored and/or flipped plans occur throughout the building please see architectural plans if material to your decision to purchase. Renderings, furnishing and equipment shown are an artist's conception and are intended as a general reference only. Please see disclosure statement for specific offering details. E.&O.E.

