

**CONTACT**

1220 Pacific Avenue, Kelowna BC  
T: 647-227-3863 E: taryn@vlsdevelopments.com

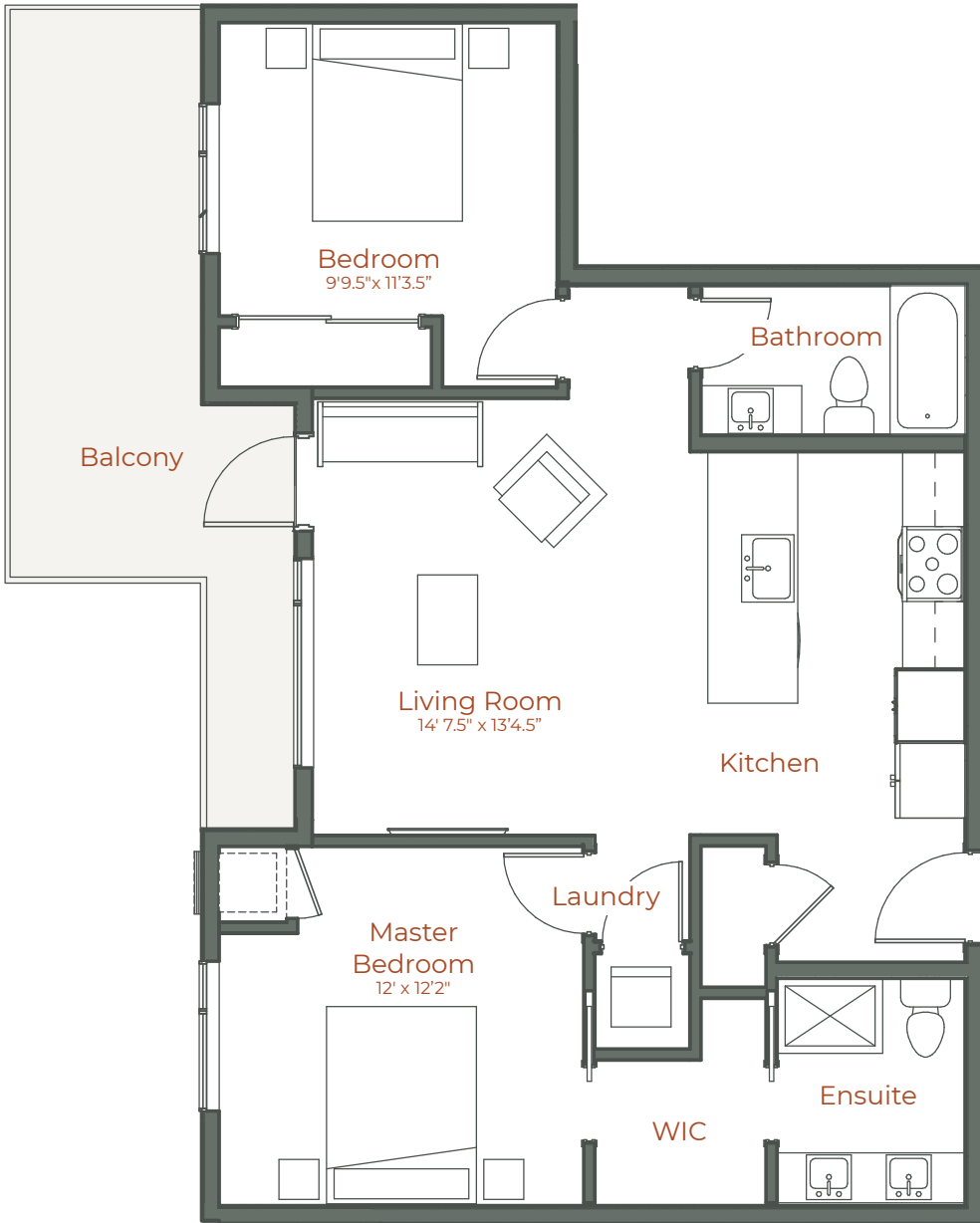
**THE RYDELL.COM**

@therydellkelowna

The Rydell: Kelowna's Central District

# The Cruiser B

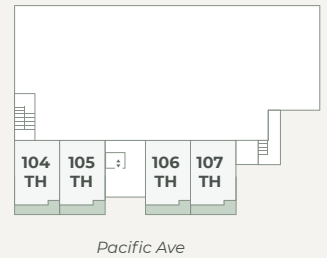
2BED/2BATH



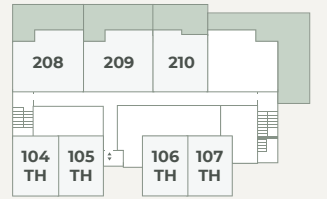
● Indoor Living	854 Sq Ft
● Outdoor Living	211 Sq Ft
<b>Total</b>	<b>1,065 Sq Ft</b>

- **HIGHLIGHTS**
- 9' Ceilings
- Quartz Countertops
- Stainless Steel Appliances

**1st Floor**



**2nd Floor**



**3rd Floor**



**4th Floor**



**5th Floor**



\*The developer reserves the right to modify or change plans, specifications, features and prices without notice. Materials may be substituted with equivalent or better at the developer's sole discretion. All dimensions and sizes are approximate and are based on architectural measurements. As reverse, mirrored and/or flipped plans occur throughout the building please see architectural plans if material to your decision to purchase. Renderings, furnishing and equipment shown are an artist's conception and are intended as a general reference only. Please see disclosure statement for specific offering details. E.&O.E.