

CONTACT

1220 Pacific Avenue, Kelowna BC
T: 647-227-3863 E: taryn@vlsdevelopments.com

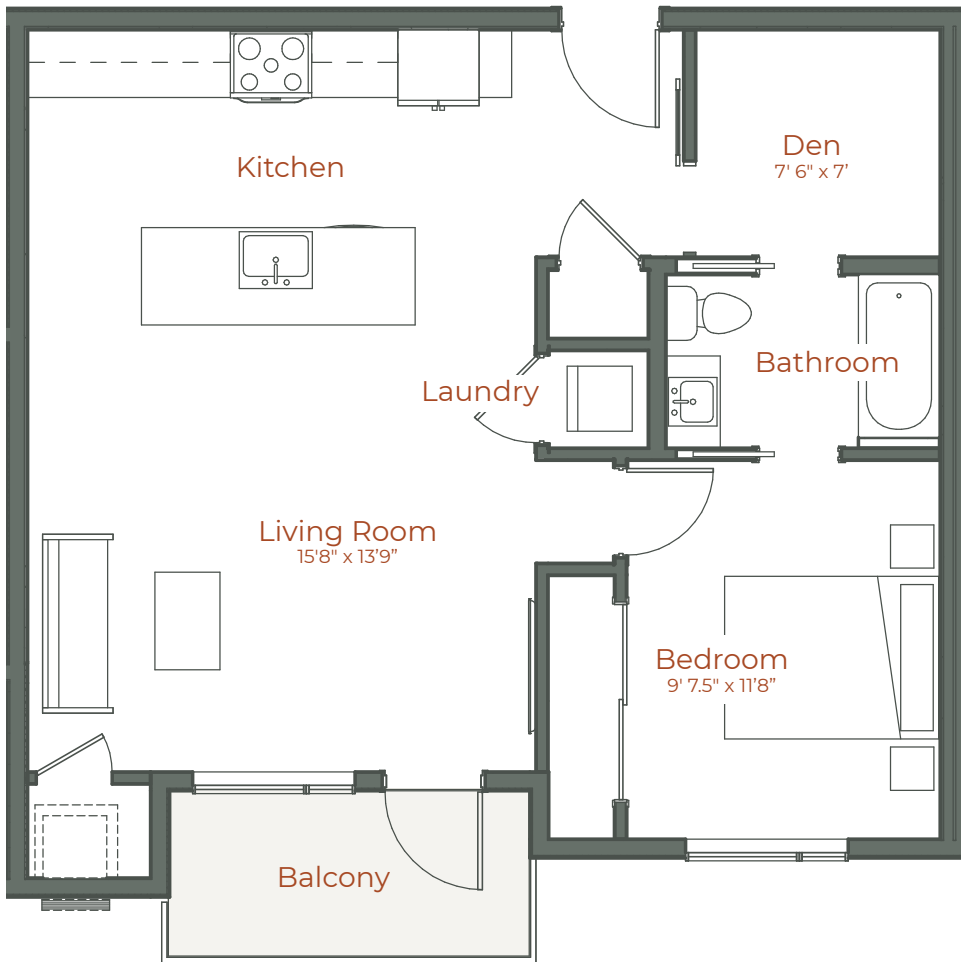
THERYDELL.COM

@therydellkelowna

The Rydell: Kelowna's Central District

The Hybrid B

1BED/1BATH + DEN

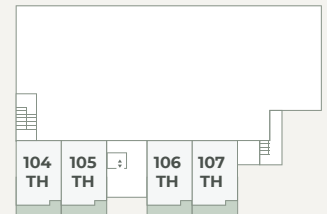


● Indoor Living	709 Sq Ft
● Outdoor Living	56 Sq Ft
Total	765 Sq Ft

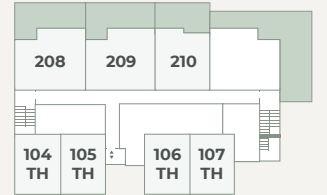
● **HIGHLIGHTS**

- 9' Ceilings
- Quartz Countertops
- Stainless Steel Appliances

1st Floor



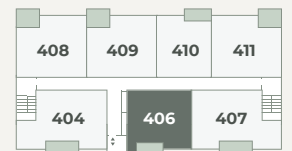
2nd Floor



3rd Floor



4th Floor



5th Floor



*The developer reserves the right to modify or change plans, specifications, features and prices without notice. Materials may be substituted with equivalent or better at the developer's sole discretion. All dimensions and sizes are approximate and are based on architectural measurements. As reverse, mirrored and/or flipped plans occur throughout the building please see architectural plans if material to your decision to purchase. Renderings, furnishing and equipment shown are an artist's conception and are intended as a general reference only. Please see disclosure statement for specific offering details. E.&O.E.

