

CONTACT

1220 Pacific Avenue, Kelowna BC
T: 647-227-3863 E: taryn@vlsdevelopments.com

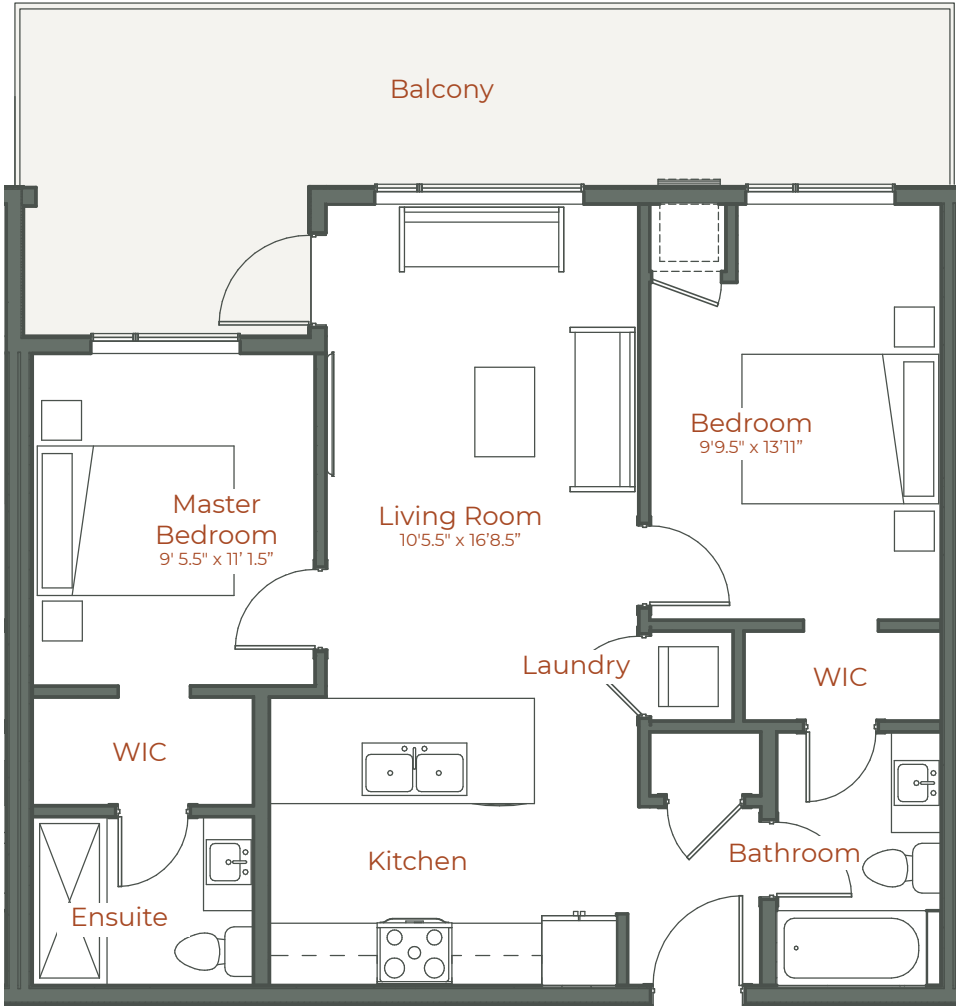
THE RYDELL.COM

@therydelkelowna

The Rydell: Kelowna's Central District

The Roadie

2BED/2BATH

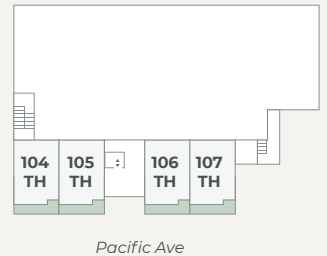


● Indoor Living	781 Sq Ft
● Outdoor Living	415 Sq Ft
Total	1,196 Sq Ft

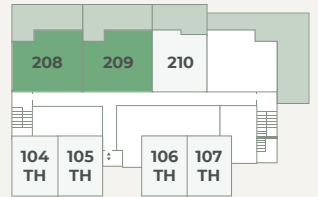
● **HIGHLIGHTS**

- 9' Ceilings
- Quartz Countertops
- Stainless Steel Appliances

1st Floor



2nd Floor



3rd Floor



4th Floor



5th Floor



*The developer reserves the right to modify or change plans, specifications, features and prices without notice. Materials may be substituted with equivalent or better at the developer's sole discretion. All dimensions and sizes are approximate and are based on architectural measurements. As reverse, mirrored and/or flipped plans occur throughout the building please see architectural plans if material to your decision to purchase. Renderings, furnishing and equipment shown are an artist's conception and are intended as a general reference only. Please see disclosure statement for specific offering details, E.&O.E.

