

**CONTACT**

1220 Pacific Avenue, Kelowna BC  
T: 647-227-3863 E: taryn@vlsdevelopments.com

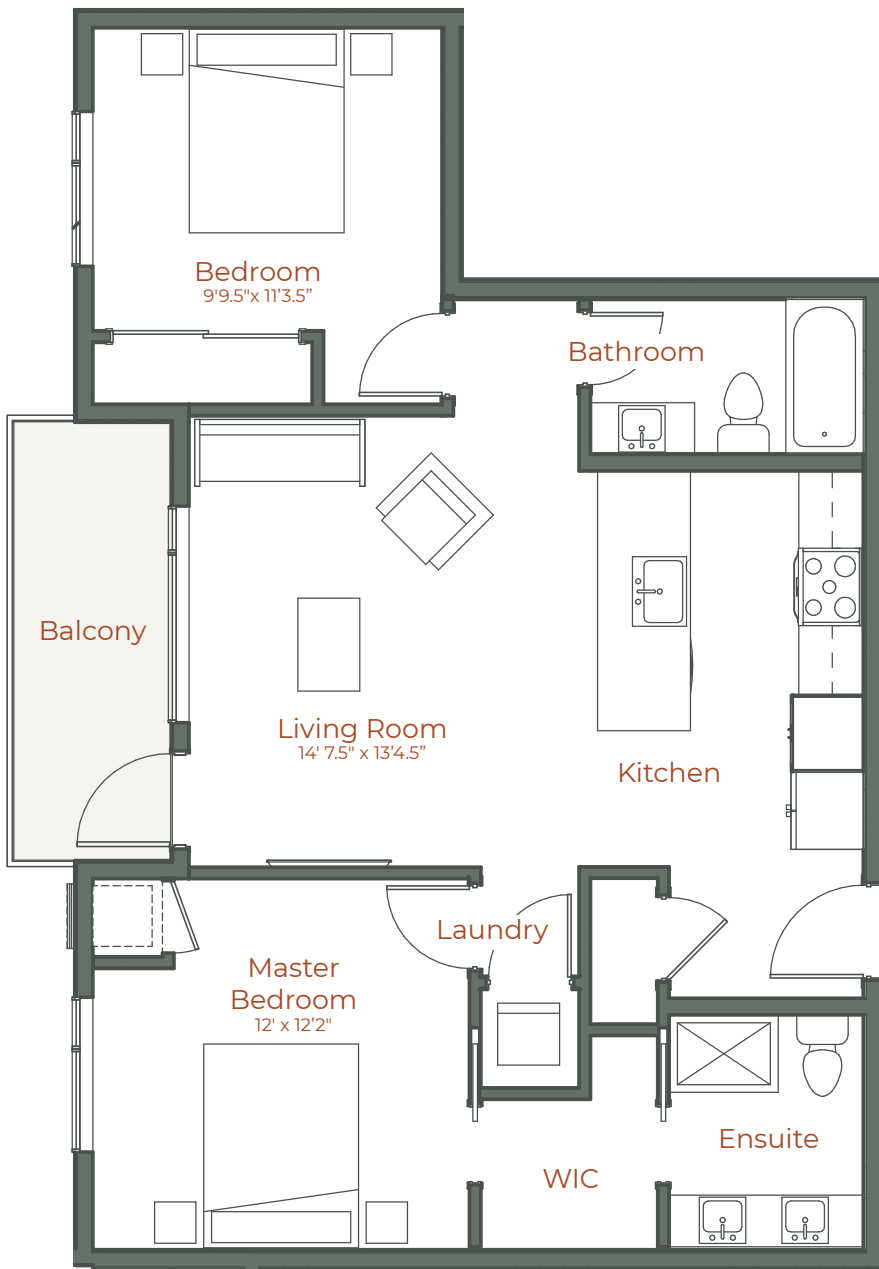
**THE RYDELL.COM**

@therydeallkelowna

The Rydell: Kelowna's Central District

# The Tandem B

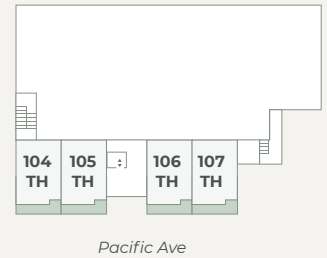
2BED/2BATH



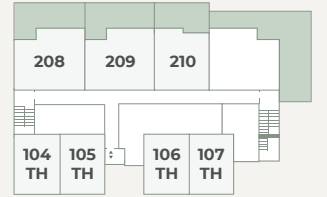
● Indoor Living	853 Sq Ft
● Outdoor Living	72 Sq Ft
<b>Total</b>	<b>925 Sq Ft</b>

- **HIGHLIGHTS**
- 9' Ceilings
- Quartz Countertops
- Stainless Steel Appliances

**1st Floor**



**2nd Floor**



**3rd Floor**



**4th Floor**



**5th Floor**



\*The developer reserves the right to modify or change plans, specifications, features and prices without notice. Materials may be substituted with equivalent or better at the developer's sole discretion. All dimensions and sizes are approximate and are based on architectural measurements. As reverse, mirrored and/or flipped plans occur throughout the building please see architectural plans if material to your decision to purchase. Renderings, furnishing and equipment shown are an artist's conception and are intended as a general reference only. Please see disclosure statement for specific offering details. E.&O.E.

